

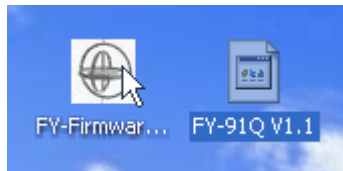
Feiyu Tech Firmware Upgrade Procedure

WARNING – Please read the following before doing any firmware upgrading:

- A) Remove the FY91Q from all connections (Remove ESC/RC wires).
- B) Ensure that during the Firmware upgrading process is not disrupted (e.g. moving your USB cable around resulting in lost connection). Disruption during the upgrading process can damage your FY91Q processor.
- C) If you are using a portable computer, make sure you have enough power to carry through the upgrade process. This is to prevent B) above.
- D) Follow the steps below **EXACTLY CHRONOLOGICALLY**. If you skip any step, firmware upgrade will fail.

THE PROCEDURE

1. Download the software from FY websites. Install it onto your desktop (or a designated folder). You will also require to download both the firmware upgrade program and the required firmware (.bin file) :

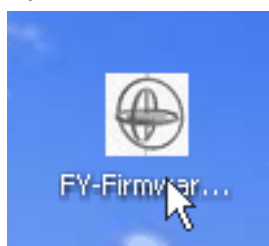


DO NOT OPEN THE FIRMWARE PROGRAM YET.

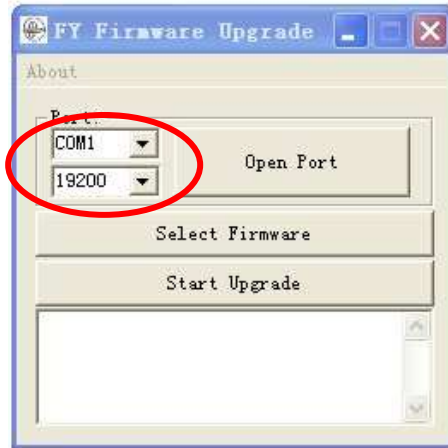
2. If you have not done so, please install the USB TTL Cable driver from FY websites. The computer **will not** recognize the USB TTL Cable if the proper driver is not installed.
3. Connect the USB-TTL cable to the computer. **Note – do not connect the FY91Q yet.**



4. Open the FY Firmware program:

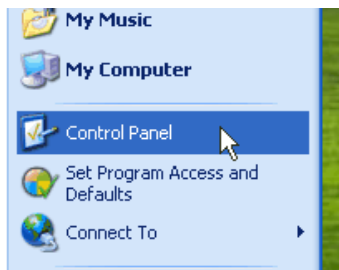


5. Select the right Com port number, and select 19200 as the baud rate.

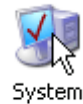


6. If you do not know which COM port number, do the following:

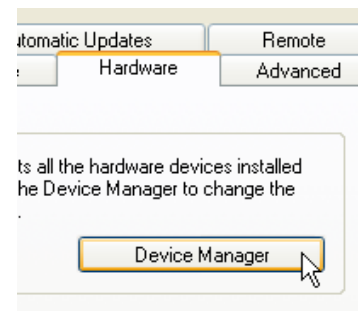
Click your control panel:



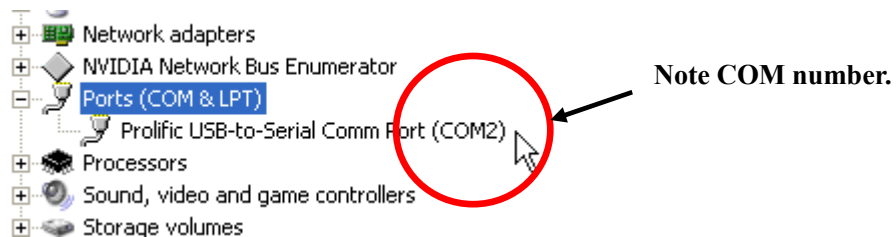
Click on system:



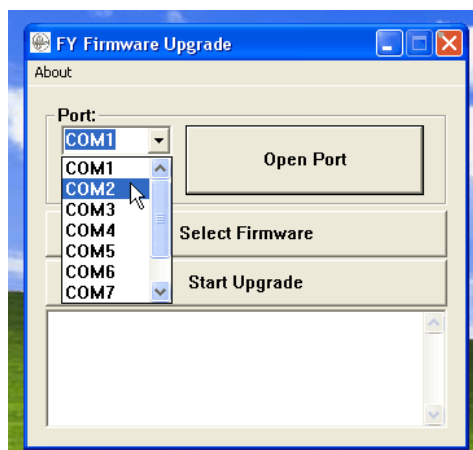
Hardware, click Device Manager:



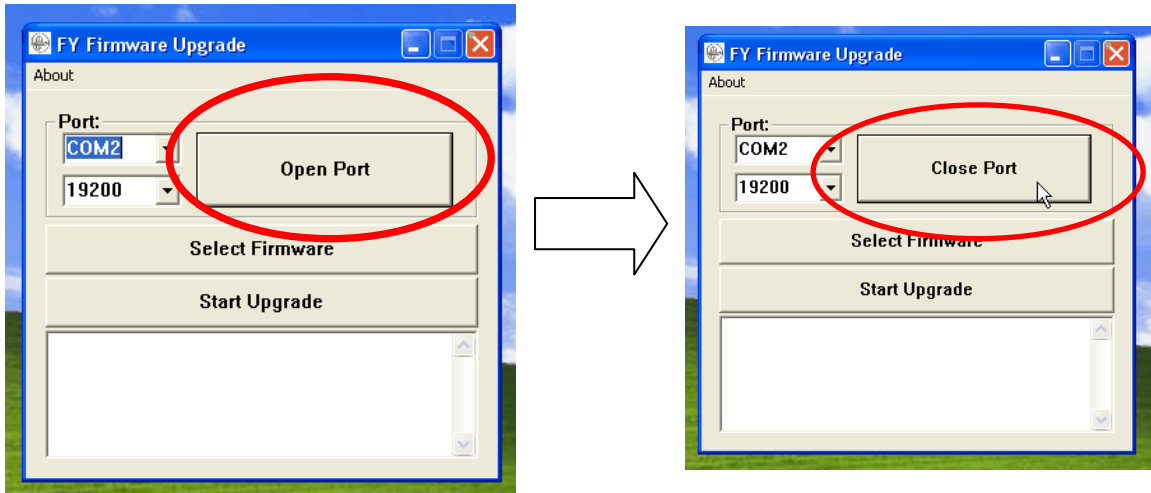
Check the COM Port number for Prolific USB-to-Serial Comm Port:



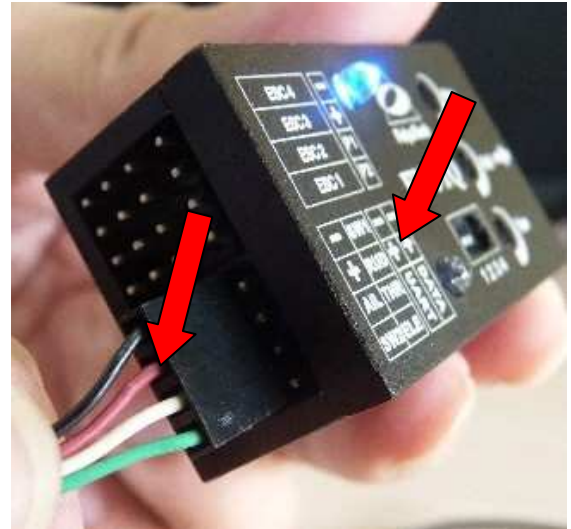
Select the above COM number onto your Firmware upgrade program:



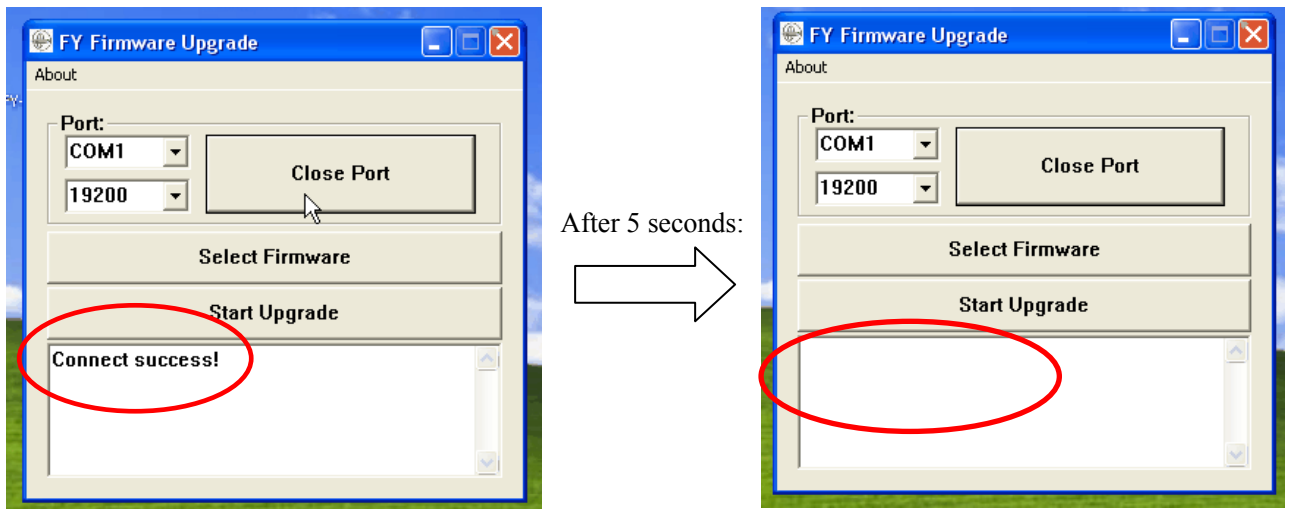
- Click "Open port" button. If the COM port is right, the word "Open Port" will change to "Close Port". Check your COM port number again if this fails.



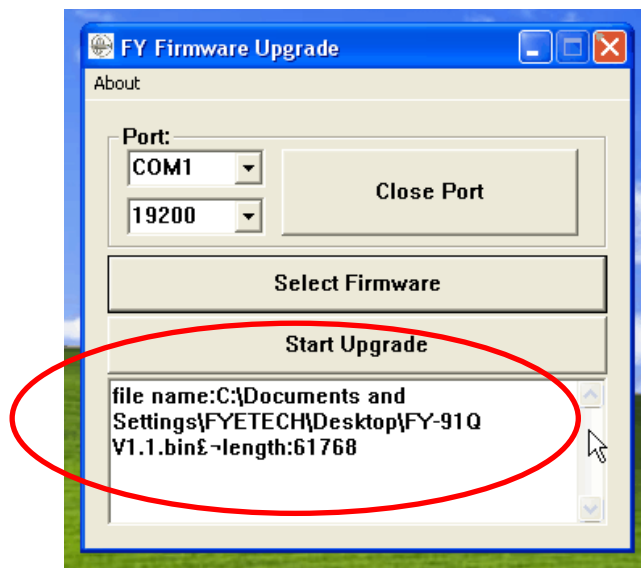
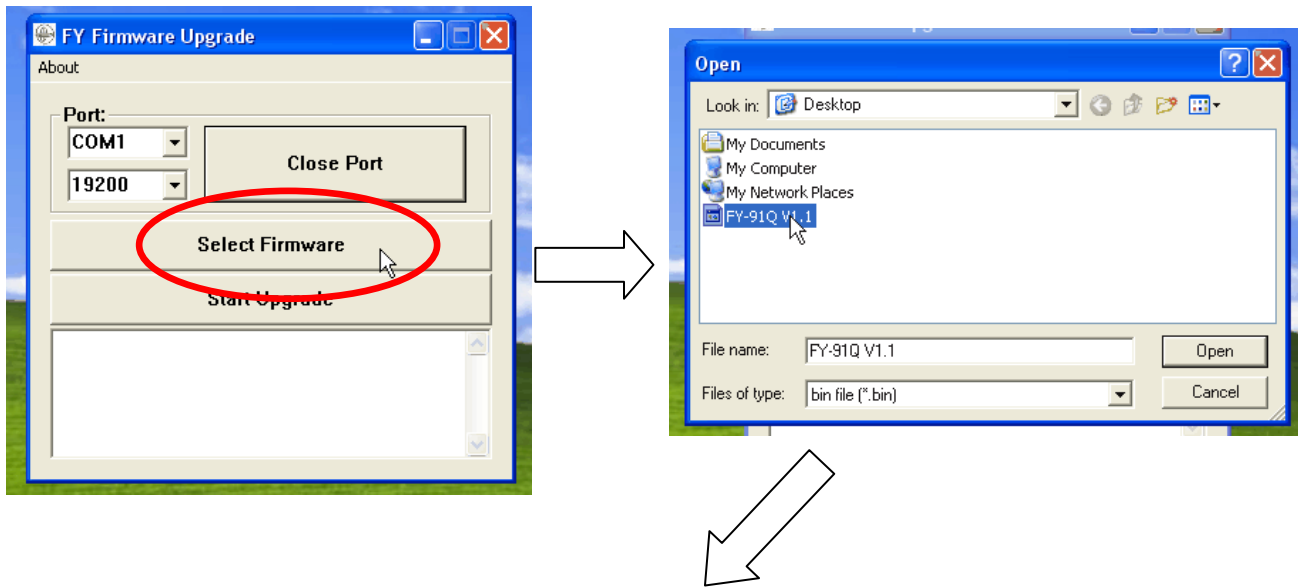
- Plug the Serial connector to the FY91Q [-,+ , UART] port. Please ensure the polarity of your wires is correct. **The RED wire is "+"**. **Wrongly connecting the polarity will damage your FY91Q.**



- After plugging in the FY91Q, you will see **"Connect success!"**. After about 5 seconds this note will disappear. **THIS IS NORMAL**. If connection is not successful, go to step no. 1 (repeat).

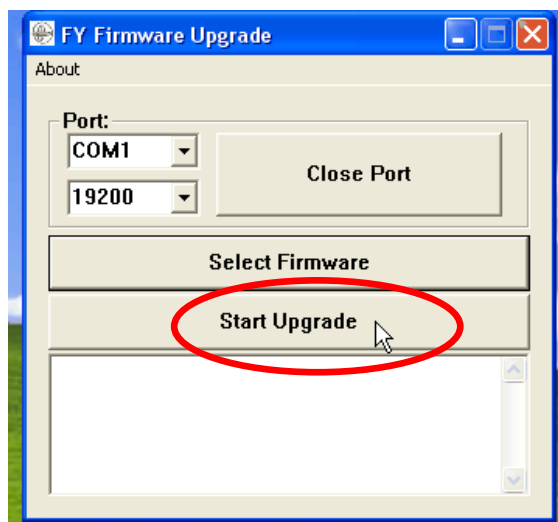


10. Select the firmware to be uploaded:



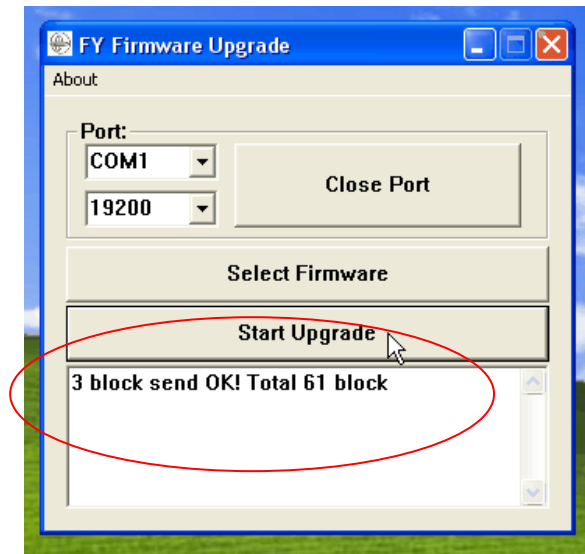
The firmware will be noted on the screen. **This note will disappear after 5 seconds.**

11. Press the Start Upgrade button:

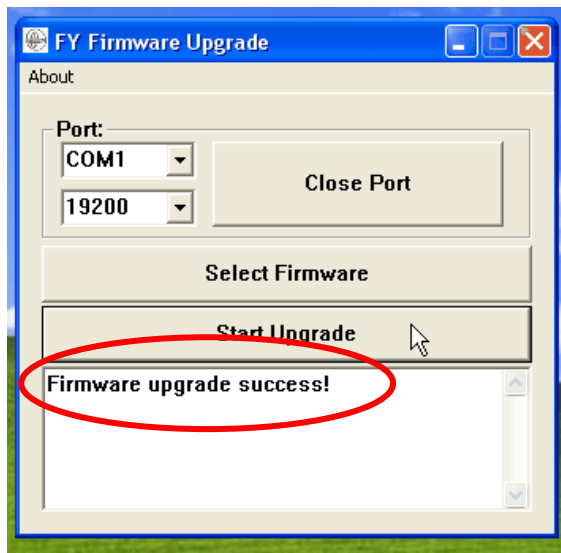


12. Immediately after pressing 'Start Upgrade', the software will show blocks of firmware being sent to the FY91Q. A total of 61 blocks will be sent.

DO NOT DISRUPT THIS PROCESS. DOING SO WILL DAMAGE YOUR FY91Q.



13. After completion of the firmware upgrade, the software will show successful upgrade:



14. Unplug the FY91Q. Label the Version that you have uploaded and test fly the new firmware.

